



west leederville residents association

500 STRONG

The West Leederville Residents Association has just passed the milestone of 500 members and continues to enjoy the support and enthusiasm of the residents and ratepayers in the area. As we gear up for 2007 it's timely to reflect back on the year that has been and look forward to the future.

PRESIDENT'S REPORT

This first inaugurated year of the WLRA has been an exciting one for the community and the level of interest and enthusiasm has been fantastic. For the committees and individuals that have taken up causes on behalf of the residents it has no doubt been both rewarding and taxing and I know that their efforts are appreciated by the membership.

Our collective efforts have seen a number of achievements in our first year, in particular I feel that we have made great progress in developing a constructive relationship with the Council and we look forward to seeing how the Council develops some of the ideas we have put forward in 2007.

More impressive, however, is the unity and enthusiasm demonstrated by the number of residents who are now members. We are keen to keep the momentum going so if you know anyone who is not yet a member, please pass on our details. Let them know membership is free and it's a great way to help build a better West Leederville and to keep in touch with what is going on in our little part of the world.

Best wishes to all for a safe and happy New Year

Shani Mulheron.

So how far did we get in 2006?

A number of issues were tackled or put on the agenda since we commenced and many of these will be ongoing. For those who aren't aware, this is what we have been up to:

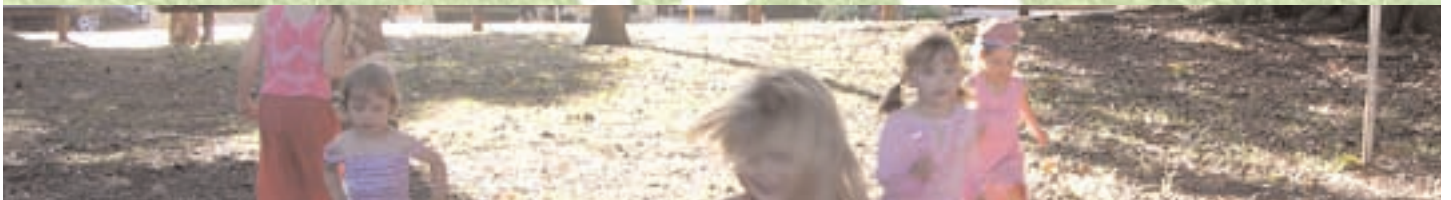
- A Community Garden project.
- A formal community based response to the Town of Cambridge Traffic Management Plan for West Leederville.
- A review of the Cambridge Street Coles development.
- A review of West Leederville parks and playgrounds.
- Developing ties to the West Leederville Primary School.
- Monitoring key development sites in the area.
- Providing representation at Council meetings.
- Developing our website to provide more information and easy access to the Association.



The Community Garden

The Community Garden project has been a very exciting development with lots of eager support. A suitable site has been identified and the Garden Committee are in the initial stages of securing this site with support 'in principle' from the Town of Cambridge.

The Garden Committee along with interested residents has been working to develop a scope of works and a picture of what we all want this project to be. We would encourage you to visit the Community Garden website by visiting our home page at www.wlra.org.au and clicking onto the "Contact us" link.



Our Parks and Gardens

While it is early days, the WLRA expects the topic of our parks and garden resources will be a big one in 2007. With the growing number of families moving into the area and onto smaller blocks, it's vital that we make sure the Council applies their resources in a way that supports the growing population.

With the West Leederville Croquet Club now closed, residents in the area, including a local architect, have been pushing for the enhancement of Holyrood Park. The WLRA are looking forward to helping the residents in achieving the best outcome.

Cowden Park is also recognised as a key local resource. In conjunction with the West Leederville Playgroup, the WLRA hope to push support for this. During 2007 our aim is to audit the local parks and gardens and to present the Council with the residents' thoughts as to how these might be resourced.

REPRESENTATION AT COUNCIL AND COMMITTEE MEETINGS

The WLRA has endeavored to have a representative attend Council and Committee meetings held by the Town of Cambridge to monitor issues that may affect the West Leederville community. In addition to this, the WLRA made representations at the recent Council AGM presenting several pertinent questions from both committee members and residents.

CEO for the Town of Cambridge, Mr. Jason Buckley, has promised to provide a detailed written reply which we intend to publish to our membership. The representation at full Council meetings, various committee meetings and the AGM have provided a means of residents and ratepayers views to be given a voice.



Coles Development Cambridge Street



The construction of the commercial/retail development at 115 Cambridge Street has commenced. The development consists of basement car park, a Coles Supermarket with 7 specialty retail shops to the ground floor and commercial tenancies plus additional car parking to the upper levels.

The specialty shops finalised at this date include a chemist, coffee shop and baker. Construction is well underway, with completion due in mid 2007.

Efforts have been made to minimise the impact on local residents, with all contractors directed to use Southport and Cambridge Street to access the site. Site hours are restricted to 7.00 am to 7.00 pm Monday to Saturday.

WEST LEEDERVILLE TRAFFIC MANAGEMENT PLAN

In response to the Council's Traffic Management Report, the WLRA submitted a response that was formulated from community feedback. This process was a catalyst for things to come and it demonstrated that while we will never make everyone happy, we are certainly capable of passing on 'popular' opinion on matters that the Council may sometimes not be aware of.

The latest communiqué to Council is that we were disappointed that their Annual Report did not seem to take any of our recommendations into consideration, particularly with regard to prioritising works to time in with the Coles development. However, following our submissions at the Council AGM, we have been promised written consideration of these and other concerns and eagerly await this.

West Leederville Primary School

For many of us, particularly those who have children there, the WLPS is a major focal point of the community. This year has seen the school 'negotiate' with the Council on issues such as parking at drop off and pick up times as well as the parking it provides during major events at the Subiaco Oval.

Whenever possible the WLRA provide support for the school on issues such as these.

WLPS Acting Principal Jenny Baynham has invited members of the WLRA and the wider community to take advantage of the new computer resources at the school. The idea is still being worked through, but it is hoped these resources will help those who might not have ready access to computers. It is hoped that this offer will be combined with some training sessions. Thanks Jenny!

38 CAMBRIDGE STREET DEVELOPMENT



What started off as an alert from residents over the illegal dumping of asbestos at 38 Cambridge St has evolved into a constructive relationship between the developers and the Community Gardens movement. In addition to incorporating various energy efficient solutions, it's pleasing to see the architect and developers working with the local community with the aim of utilizing recycled grey water as part of the community gardens project.

Whilst the scale and density of the approved development will not please everyone in the area, it's pleasing to see the architects thinking 'outside the box'. The development consists of two towers containing 32 apartments in total. The front tower (facing Cambridge St) will be 6 storeys high, with the rear tower being 3 levels lower. The site has now been cleared and completion is expected in 2008.

Website Launch

The WLRA has been founded on the need to get quick and simple access to the residents/members whilst acknowledging the time constraints of our busy lifestyles. Through a growing e-mail network this has been achieved with great success and we can now communicate with our membership at a time and place convenient to our members without the need to attend a meeting.

With the sponsorship of Webfirm, we now have a fabulous website providing everyone with access to all sorts of WLRA information and links to community news. It's also a great place for you to send your comments and concerns. If you haven't been there yet, click here to get an eyeful!. www.wlra.org.au. For those who don't have e-mail access, this newsletter is being delivered in hardcopy on request.



Did You Know?

- If you don't have an e-mail address, the WLRA will post to you any important information, all you have to do is call 'Data Girl' (Kim) 9388 6885 and provide postal details.
- The WLRA membership now exceeds 25% of the West Leederville population.
- There is a Council Community Perceptions Survey able to be viewed on their website go to <http://www.cambridge.wa.gov.au/information/css>
- That free bin stickers are available from the ToC promoting slower speeds in our streets.
- That membership to the WLRA is free!
- That school dads meet regularly at JB O'Reilly's every Monday night.
- That Council can assist with graffiti removal..call 9347 6000.
- The Council offers a free child restraint fitting service.
- That there is a Councillors' Report on the WLRA web site.

Thanks again to all the residents and ratepayers of West Leederville for helping to make this such a great community to live in. The WLRA would like to wish you a safe and prosperous 2007!